

Cardiovascular Summit

Addressing Health Care Disparities:
*What Are We Doing in Our Practices to
Ensure Access?*

**Dipti Itchhaporia, MD &
Robert O. Roswell, MD**

STRATEGIZE
INNOVATE
IMPLEMENT
TRANSFORM





WHAT IS HEALTH EQUITY?

Health equity means that **everyone** has a fair and just opportunity to be healthy.

Robert Wood Johnson Foundation

“Health Equity is defined as **the absence of unfair and avoidable or remediable differences in health among population groups defined socially, economically, demographically or geographically**”.

World Health Organization

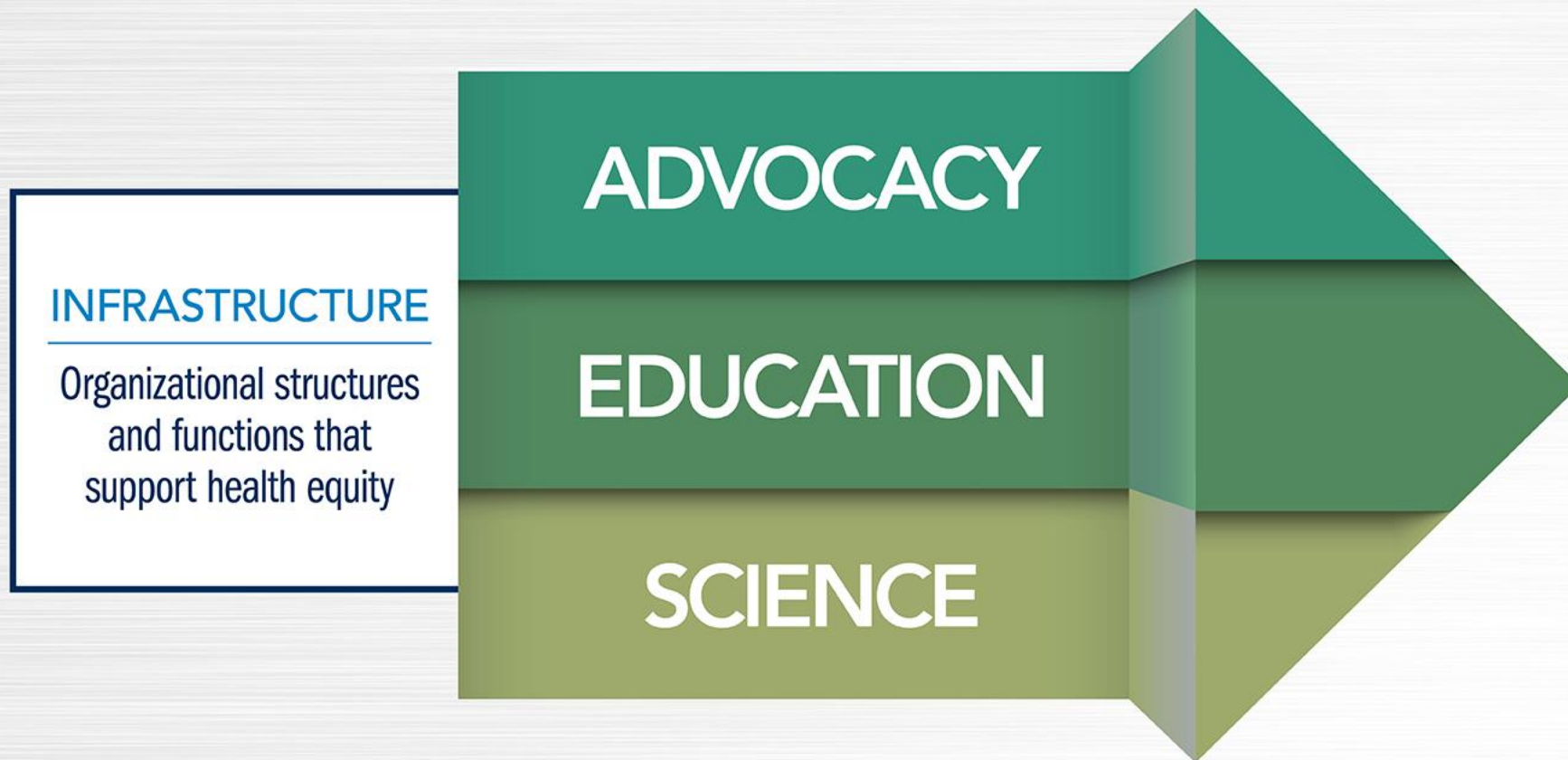
**Cardiovascular
Summit**



AMERICAN
COLLEGE of
CARDIOLOGY

JOIN THE CONVERSATION:
#CVSUMMIT

PAVING THE ROAD TO HEALTH EQUITY



ACHIEVING CARDIOVASCULAR HEALTH EQUITY

Ensures quality health care for all, ultimately optimizing cardiovascular care and heart health.



AMERICAN
COLLEGE *of*
CARDIOLOGY®

ACC HEALTH EQUITY STRATEGY

VISION

Achieve a culture of health where every person reaches their full cardiovascular health potential as a natural right.

STRATEGIES GOALS

CREATE A CULTURE OF HEALTH EQUITY IN CARDIOVASCULAR MEDICINE

- Execute change management to create a mindset that health equity is an essential component of quality cardiovascular care
- Commit to cardiovascular health equity principles and develop policies for action
- Support and pursue partnerships with organizations committed to addressing health equity

PRIORITIZE HEALTH EQUITY IN ALL ACC ACTIVITIES

- Embed health equity in educational curriculum and programming and guidelines development
- Provide clinical programs and guidance to identify and evaluate disparities and social determinants of health
- Integrate health equity into compliance requirements

ELIMINATE DISPARITIES BY ENSURING EQUITABLE CARDIOVASCULAR CARE FOR ALL

- Provide actionable data and tools that empower cardiovascular professionals to address health disparities and social determinants of health
- Partner with public health and community stakeholders to ensure availability of resources for optimal patient care that eliminates disparities
- Drive innovation to address health equity



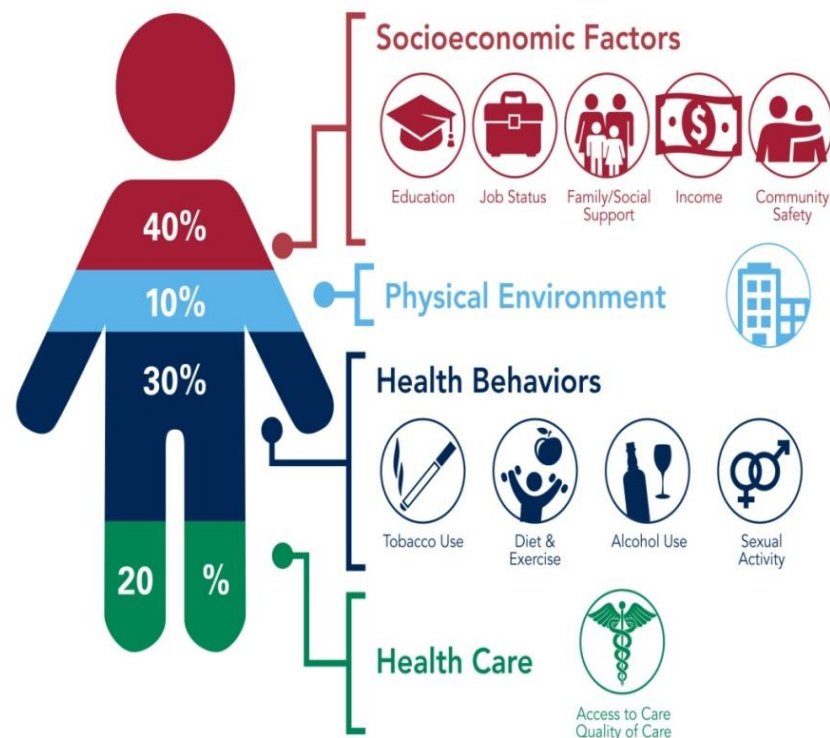
AMERICAN
COLLEGE *of*
CARDIOLOGY

Social Determinants of Health



IMPACT OF SOCIAL DETERMINANTS OF HEALTH

Social determinants of health have tremendous affect on an individual's health regardless of age, race, or ethnicity.



SDOH Impact

- ➔ **20 percent** of a person's health and well-being is related to **access to care and quality of services**
- ➔ The physical environment, social determinants and behavioral factors drive **80 percent** of health outcomes

Source: Institute for Clinical Systems Improvement; Going Beyond Clinical Walls: Solving Complex Problems, 2014 Graphic designed by ProMedica.

©2018 American Hospital Association

Itchhaporia et al. *J Am Coll Cardiol* 2021; 77:2613-2616.

**Cardiovascular
Summit**



AMERICAN
COLLEGE of
CARDIOLOGY

JOIN THE CONVERSATION:
#CVSUMMIT

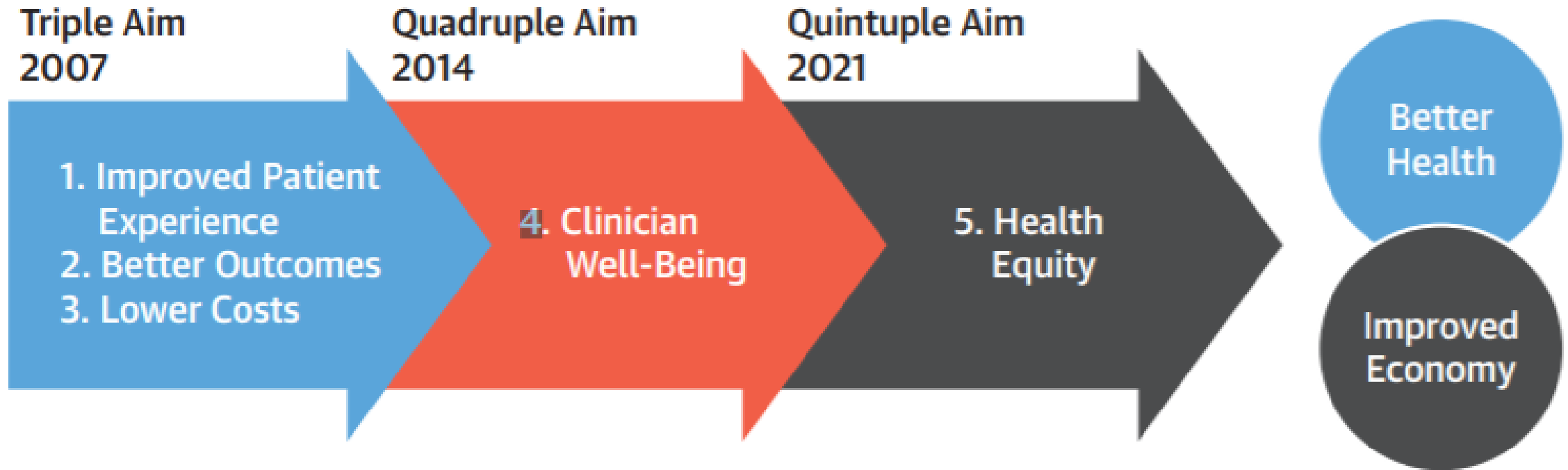


The Evolution of the Quintuple Aim

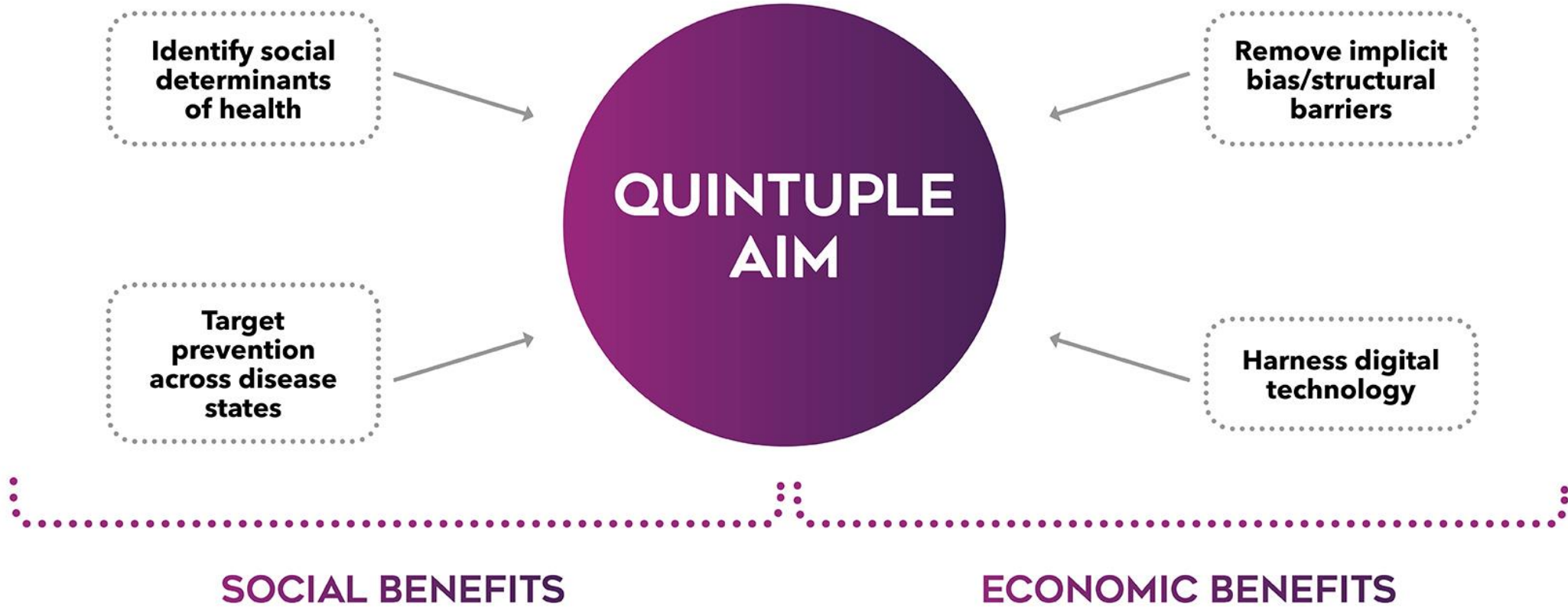
Health Equity, Health Outcomes, and the Economy



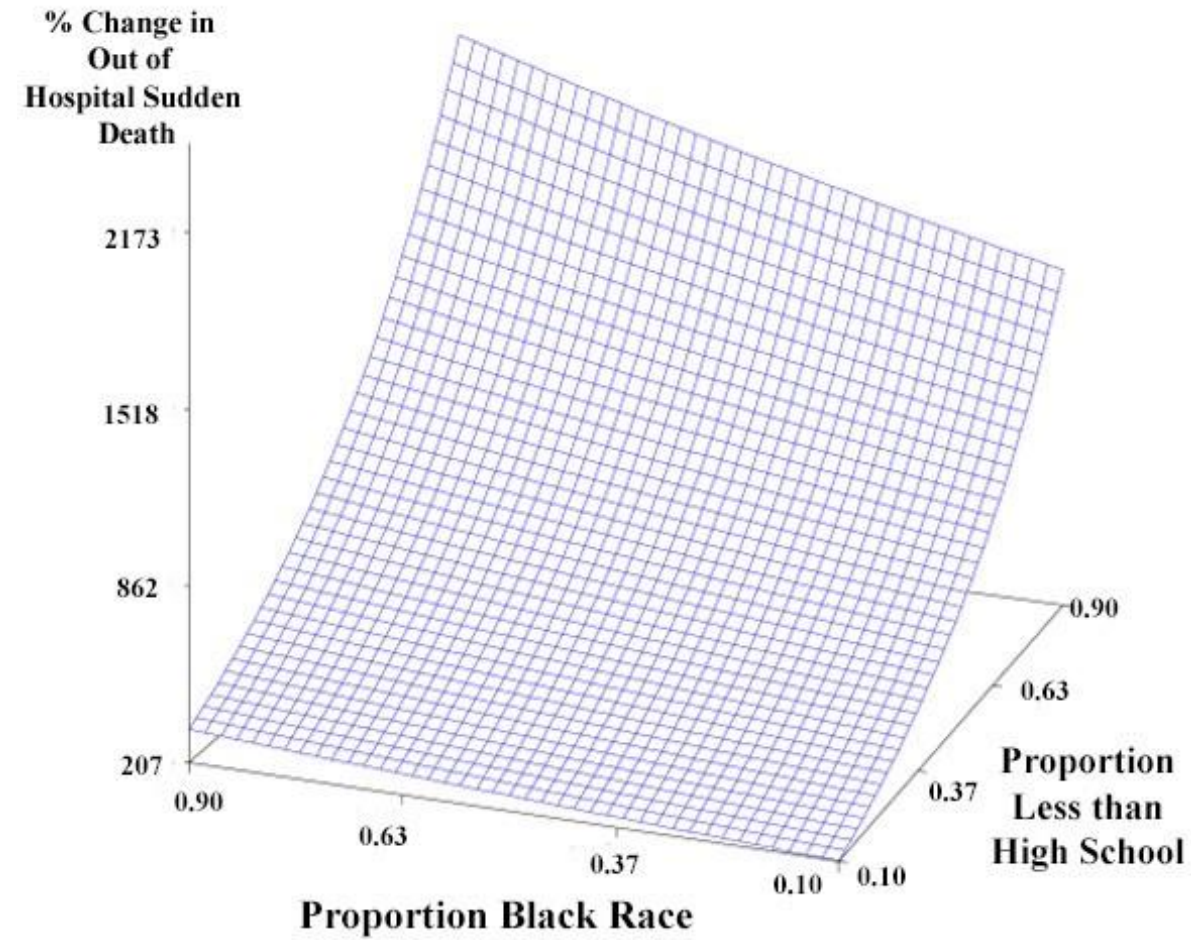
FIGURE 1 Evolution to the Quintuple Aim



RETHINKING THE APPROACH TO HEALTH CARE



Variable	NYC (n = 8 491 238)	β	p-value
Percent Single Parent Household	23.0%	1.49	0.001
Percent Unemployed	6.9%	9.1	0.03
Percent less High School	18.3%	1.26	<0.001
Percent No Health Insurance	8.4%	5.18	<0.001
^a Percent Poverty Index Under 2.0	37.3%	1.37	<0.001
Log Population Density (per square mile)	10.7	0.13	0.04
^c Crime Rate per 1000 Residents	16.4 ± 16.2	-0.003	0.62



Multivariate Model	β	Confidence Interval		p value
		Lower Limit	Upper Limit	
Proportion Black Race	0.42	0.02	0.83	0.04
Proportion Less than High School	2.08	1.07	3.10	<0.001

The Association of Structural Inequities and Race with Out of Hospital Sudden Death during the COVID-19 Pandemic. Mountantonakis et al & Roswell, RO *Circ Arrhythm Electrophysiol.* 2021 May;14

Downstream Vs Upstream Interventions What Can We Do?



**Cardiovascular
Summit**



AMERICAN
COLLEGE *of*
CARDIOLOGY

JOIN THE CONVERSATION:
#CVSUMMIT

OFFICIAL LAUNCH

THE CONGRESSIONAL SOCIAL DETERMINANTS OF HEALTH CAUCUS!

CO-CHAIRS:



Rep. Cheri Bustos
IL-17



Rep. Tom Cole
OK-04



Rep. GK Butterfield
NC-01



Rep. Markwayne Mullin
OK-02

<https://congressionaldohcaucus.org/>

**Cardiovascular
Summit**



AMERICAN
COLLEGE of
CARDIOLOGY

JOIN THE CONVERSATION:
#CVSUMMIT

Tips to address health disparities at the bedside

- As physicians, you'll pull many drowning people from the river.
- Routinely ask about social needs and cultural preferences
- Check your assumptions, judgements and bias
- Don't forgo using an interpreter
- Incorporate a patient's social needs into your treatment plan
- Finish with teachback
- Leverage your power, you are in a position to advocate for your patient

